

Championing sustainability



FACT SHEET

How sustainability is part of Inland Rail

We strive to deliver the best possible outcomes for communities and the natural environment by focusing on social, environmental and economic sustainability.

The Inland Rail *Sustainability Strategy* guides the integration of sustainability measures across all aspects of planning, design and implementation.

We are also aiming to establish a new sustainability benchmark for environmental and socio-economic performance for the rail industry more widely.

We are committed to achieving an 'Excellent' rating for the design and construction of all 13 Inland Rail projects and will be independently evaluated on our performance by the Infrastructure Sustainability Council of Australia (ISCA).

Each Inland Rail project (or section of the alignment) contributes to the overall program rating under the Infrastructure Sustainability (IS) scheme.

What is sustainability?

For us, sustainability means:

- ▶ delivering a world-class infrastructure asset that embraces innovation, and is cost effective and efficient
- ▶ delivering a lasting positive legacy
- ▶ empowering regional and local communities to take advantage of the thousands of jobs and millions of dollars of procurement that will be generated during construction
- ▶ working with stakeholders to protect highly sensitive natural environments, waterways and heritage places within, or adjacent to, our rail alignment
- ▶ responding to the challenges of climate change and resource scarcity by using water, fossil fuels and materials efficiently, and maximising waste recycling across the supply chain
- ▶ implementing systems and processes to enable continuous improvement across the design, construction and operational phases.

Cost benefit assessment of IS rating

We commissioned a tool that assesses the costs and benefits of implementing the IS rating on a typical package within the program.

The benefits of the tool include:

- ▶ quantifying, in financial terms, the opportunities for optimised sustainability
- ▶ demonstrating how the IS rating aligns with commercial and sustainability objectives
- ▶ analysing costs and benefits associated with the implementation of individual IS credits
- ▶ benchmarking sustainability performance of projects against the IS rating tool
- ▶ building capacity and future buy-in for whole-of-life sustainability on Inland Rail.

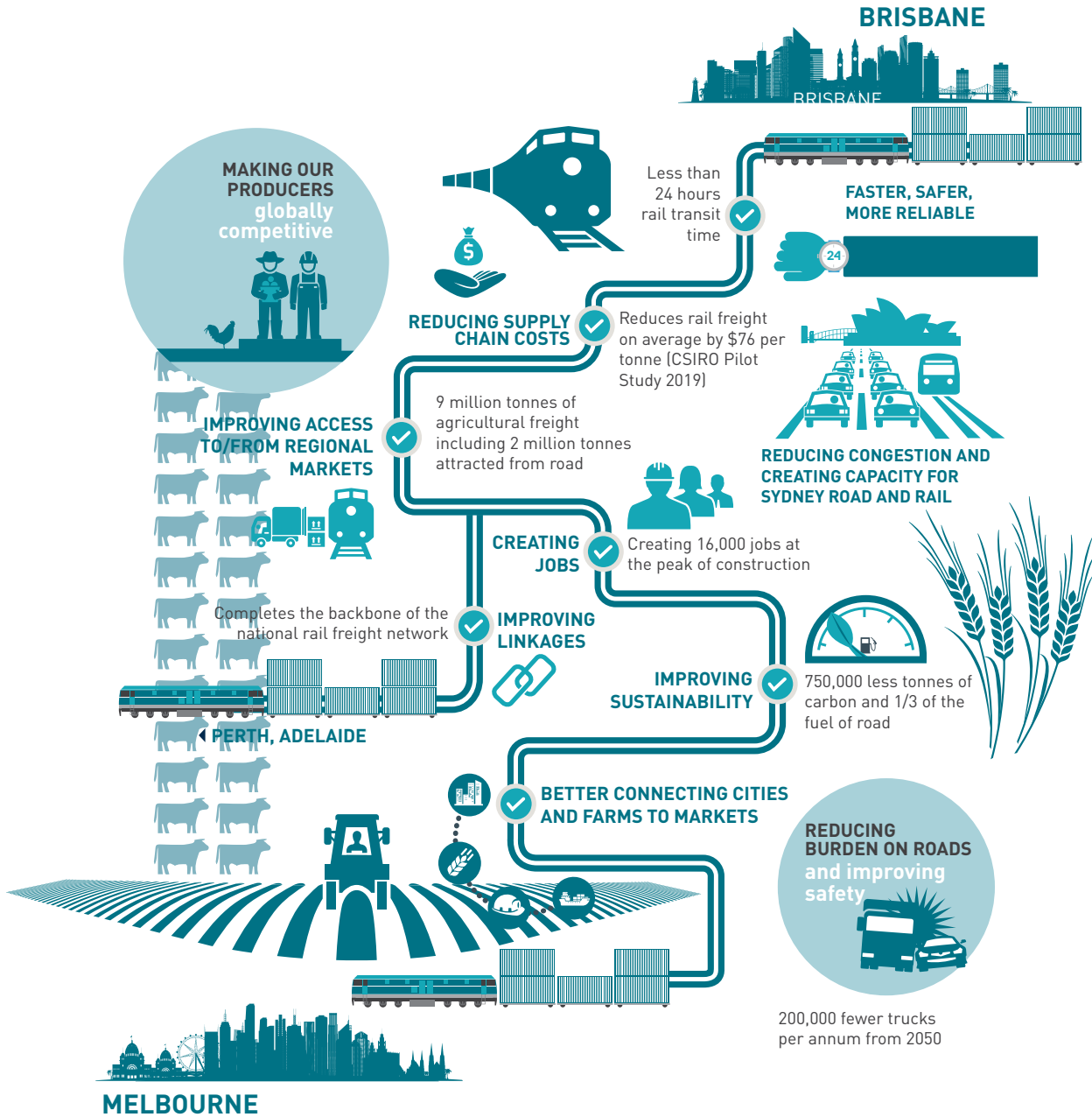
The benefits of Inland Rail

Domestic freight volumes are forecast to more than double by 2050. This demand will be too much for road freight alone to manage.

Inland Rail is designed for double-stacked trains up to 1,800m long with the equivalent freight capacity of 110 B-double trucks. This makes rail freight more efficient, cost competitive and reduces carbon emissions.

We are also targeting social sustainability which is about gaining community acceptance and supporting community aspirations for the long term.

One example is the Inland Rail Skills Academy program which is expected to make a positive and long-lasting contribution to skills development and employment prospects.



Want to know more?

ARTC is committed to working with landowners, communities, state and local governments as a vital part of our planning and consultation work, and we value your input. If you have any questions or comments about this fact sheet, please let us know.

- 📞 1800 732 761 (24 hours, 7 days)
- ✉ inlandrailenquiries@artc.com.au
- 📧 ARTC Inland Rail, GPO Box 2462, Brisbane QLD 4001

inlandrail.com.au



ARTC

The Australian Government is delivering Inland Rail through the Australian Rail Track Corporation (ARTC), in partnership with the private sector.

CURRENT AS AT JANUARY 2020